

HY45 Modular Pre-Punched Plates Series

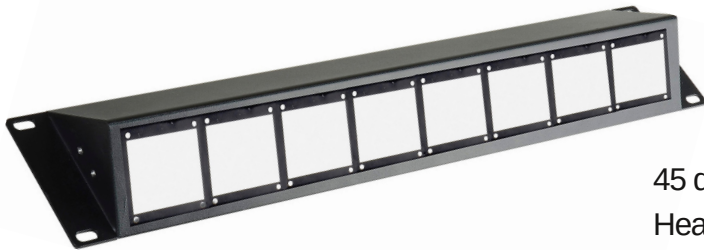
Design and build custom connector panels and cabinets using these "HY45" modular pre-punched plates. Assembles easily using our unique 45 degree 8 position 2RU rack panel as a starting point and filling it with up to 8 pre-punched modules and your connectors and SMPTE Hybrid breakout cables. All hardware sits flush to create a professional all black appearance with no unsightly gaps.

The "HY45" system is designed with SMPTE Hybrid in mind with the ability to add triax, Neutrik OpticalCON, ST and others in the same 45 degree rack panel. Perfect for truck I/O panels, studio to control rooms, stadiums, arenas and more.

Connectors sold separately. Plate mounting hardware included.

HY45-45D2RU

45 Degree 2RU 8-Position Empty Rack Frame



45 degree 8 position 2RU rack panel.
Heavy duty black powdercoated aluminum.

HY45-BX1

2RU Aluminum Enclosed Cabinet for the HY45-45D2RU & HY45-90D2RU



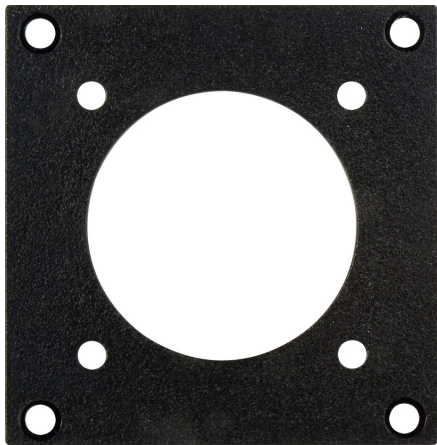
Enclosed 2RU aluminum cabinet that mates with the HY45-45D2RU 8 Position 45 Degree 2RU modular rack panel (not included). Rear panel of enclosed cabinet is blank for multi-use applications.

Cabinet Dimensions: 9"D x17"W x 3.5"H

HY45 Modular Pre-Punched Plates Series

HY45-105

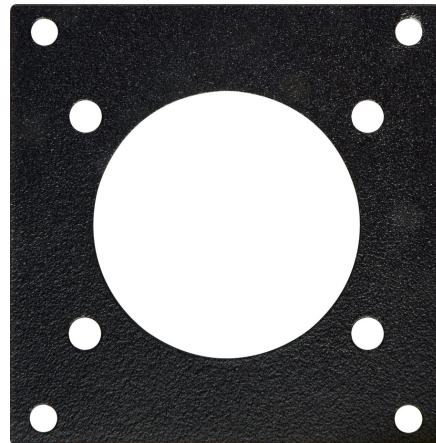
Triax Female Jack Pre-Punched
Frame Module for HY45 System



Triax female connector compatible.

HY45-104

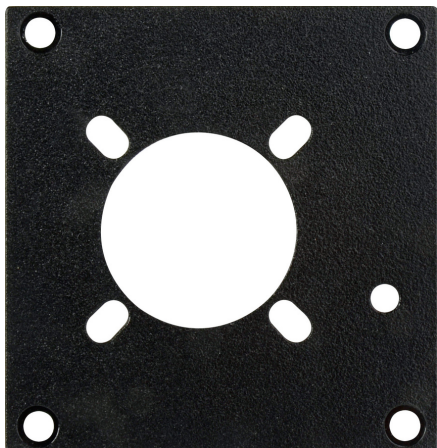
Triax Male Plug Pre-Punched
Frame Module for HY45 System



Triax male connector compatible.

HY45-101

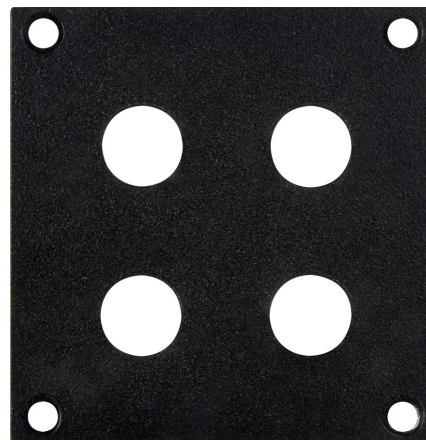
LEMO SMPTE HY45 Plug or
Jack Pre-Punched Frame



SMPTE plug or jack connector compatible.

HY45-103

Quad ST Fiber Feedthrus Pre-
Punched Frame

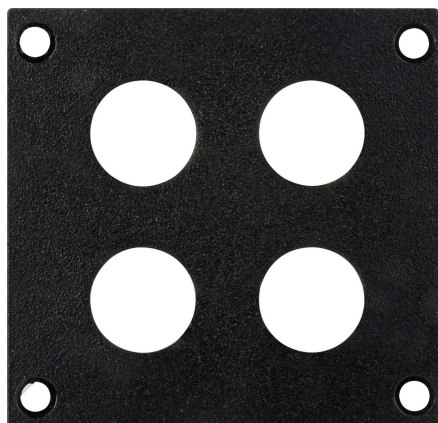


Quad ST fiber feedthru compatible.

HY45 Modular Pre-Punched Plates Series

HY45-111

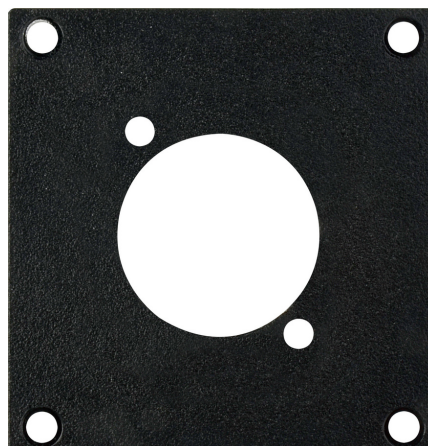
Quad BNC Feedthrus Pre-Punched
Frame Module for HY45 System



Quad BNC feedthru compatible.

HY45-112

Universal D-Punch Frame Module
(opticalCON) for HY45 System



opticalCON connector compatible.

HY45-114

Blank Cover Plate for HY45
System

