

CAMPLEX FMW SMPTE BREAKOUT CABLE MOUNTING PROCEDURE

**STEP 1)**

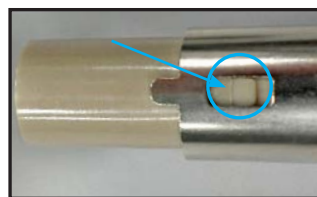
Unscrew the SMPTE connector's collet nut using a 15mm wrench and slide away from connector shell.

**STEP 2)**

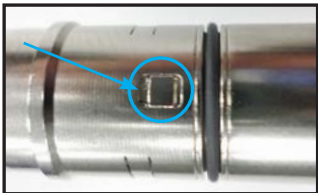
Unscrew the SMPTE connector back nut using a 15mm wrench and remove shell from connector body.

**STEP 3)**

Mount the SMPTE connector shell to the outer face of the panel, with red indicator pointing up.

**STEP 4a)**

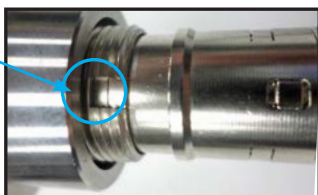
Ensure the insulator tab fits securely into top plate.

**STEP 4b)**

Verify earthing body tab fits into the bottom plate of the connector shell. The metal shells should close completely with no gaps showing. This step is critical.

**STEP 5)**

Insert connector body into the rear of the panel mounted SMPTE connector with the insulator tab facing up.

**STEP 6)**

A key at the bottom of the metal plates of connector body should fit into the notch cut into the connector shell.

**STEP 7)**

Replace & tighten the back nut and collet nut using a drop of thread-locker on each set of threads.