

**We are proud to be a Neutrik Certified
and Factory Authorized facility!**

CAMPLEX®

CAMPLEX OPTICALCON FIBER OPTIC SOLUTIONS

Custom Fiber Solutions Specialized for Broadcasting, Pro Audio and Pro AV

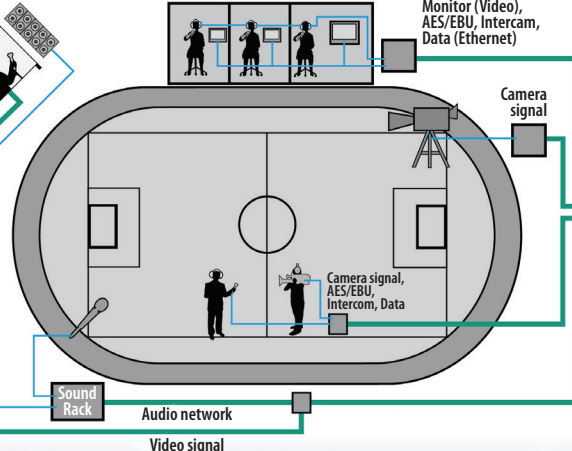
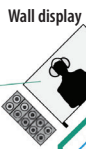
Breakout Cables



Specialty Products



Outdoor Broadcast Truck Workflow



Camplex offers Custom Neutrik opticalCON Solutions

Only a few years ago, the use of fiber optic cabling was limited to such special cases as HD broadcast cameras. Since then, the adoption of fiber optics has increased immensely. Today, fiber optic cables are widely used for digital signal transmission and network applications in the pro audio, broadcast, and touring/rental industries.

THE APPLICATIONS FOR FIBER ARE EXTENSIVE. SOME EXAMPLES ARE:

- ◆ Network (audio, data, or DMX) transmissions with >70 m (mobile) or >100 m (installation) lengths, connected to professional equipment (e.g. mixers) that uses fiber optic connectors or fiber optic switching
- ◆ Digital HD video transmissions >15 m (e.g. DVI, HDMI, or KVM projection) using fiber optic media converters
- ◆ Future-proof installations designed to eliminate bandwidth limitations
- ◆ Noise and EMI protection on audio or video (LED wall) applications
- ◆ Increased bandwidth, especially for broadcast applications
- ◆ Minimized cabling by embedding multiple data signals

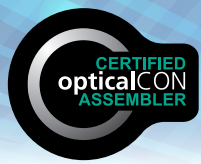


Why Camplex?

- Low Insertion Loss
- Low Return Loss
- Clean And Scratch Free
- Quick Turn Around
- Custom Lengths
- Special Labeling
- Color Coding
- Factory Tested
- Interferometer & End Face Tests sent with each cable shipment



**Many Custom
Cable Options
from Camplex!**



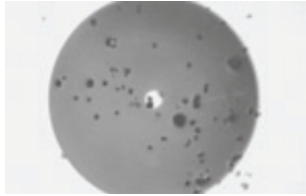
**We are proud to be a Neutrik Certified
and Factory Authorized facility!**

CAMPLEX®

CAMPLEX OPTICALCON FIBER OPTIC SOLUTIONS

Clean

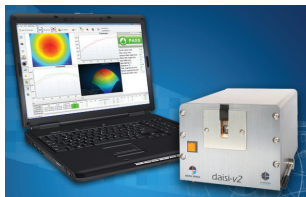
Before



After



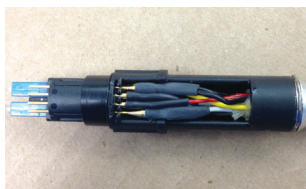
Test



Repair



Rebuild



Replace



opticalCON DUO

- Ruggedized and dirt-protected 2-channel fiber optic connection system
- Cable connector features rugged all-metal housing and heavy-duty cable retention
- Automatic sealing shutter with silicone gasket
- Dust and water resistant according to IP65 in mated condition
- Accommodates standard optical LC-Duplex connectors
- Field repairable
- Easy to clean, no tools required
- Reliable Push-Pull locking mechanism
- Color-coded cable connector comes pre-assembled with a choice of mobile field cables

opticalCON QUAD

- Ruggedized and dirt-protected 4-channel fiber optic connection system
- For POINT-TO-POINT multichannel routing
- Cable connector features rugged all-metal housing and heavy-duty cable retention
- Innovative spherical shutter guarantees low maintenance
- Dust and water resistant according to IP65 in mated condition
- Easy to clean, no tools required
- Reliable Push-Pull locking mechanism
- Color-coded cable connector comes pre-assembled with a choice of mobile field cables
- Field repairable

Complex has partnered with Neutrik to deliver the highest quality assembly options to its customer base.

Complex continues to be the unsurpassed leader in the field, utilizing Neutrik's rugged stainless steel connectors and manufacturing with the patience and care that Complex brings to its opticalCON fiber assemblies.


Fiber assemblies are machine polished for >55db RL or better and tested end to end, optically and electrically. All Complex broadcast assemblies are backed by our 1 year factory warranty due to any defect in material or workmanship.

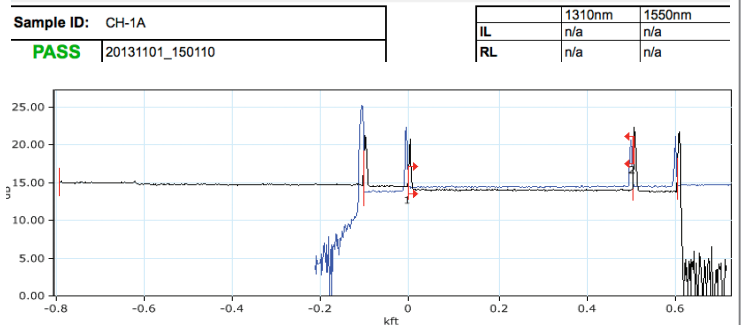
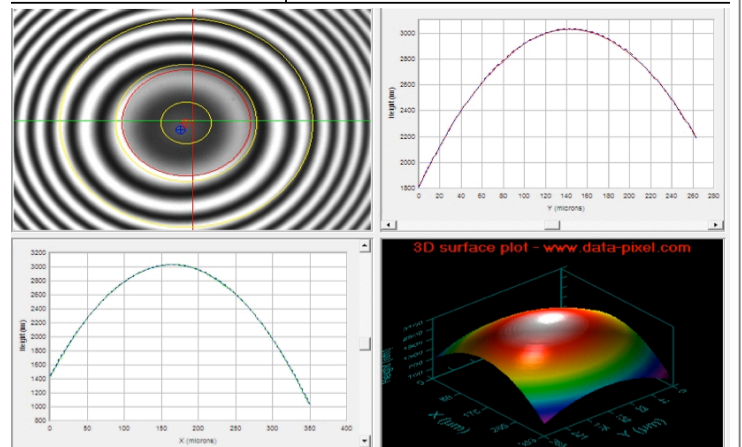
If you have a custom requirement that you do not see in our catalog, please contact your factory representative for a quote.

Neutrik opticalCON Chassis Connectors



Complex Assembly Test Report

Sample ID: CH-1A			PASS	
Sample Type: PC				
Measurement Time & Date: 20131101_150110				
Fitting Regions: D=250um; E=140um; F=50um;				
Measurement Parameter	PASS/FAIL Settings		Measurement Result	Passed or Failed
	Minimum	Maximum		
Ferrule Radius of Curvature	7.00	25.00	8.53 mm	PASS
Fiber Radius of Curvature	n/a	n/a	8.41 mm	
Fiber Height (Spherical Fit)	-295.6	50.0	-2.8 nm	PASS
Fiber Height (Planar Fit)	n/a	n/a	252.1 nm	
Apex Offset	0.0	50.0	10.2 µm	PASS
Apex Bearing	n/a	n/a	209.7 deg.	
Angle Error	n/a	n/a	0.068 deg.	
Key Error	n/a	n/a	n/a deg.	
Fiber Roughness (Sq)	0	50	3 nm	PASS
Ferrule Roughness (Sq)	0	50	3 nm	PASS
Ferrule Bore Diameter	n/a	n/a	126.8 µm	
Comments				



CAMPLEX®.com



CAMPLEX®

